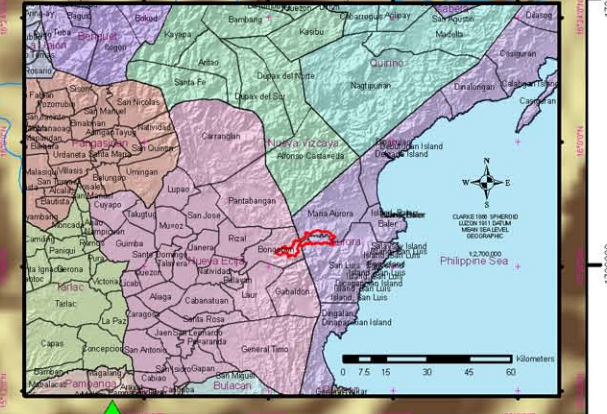
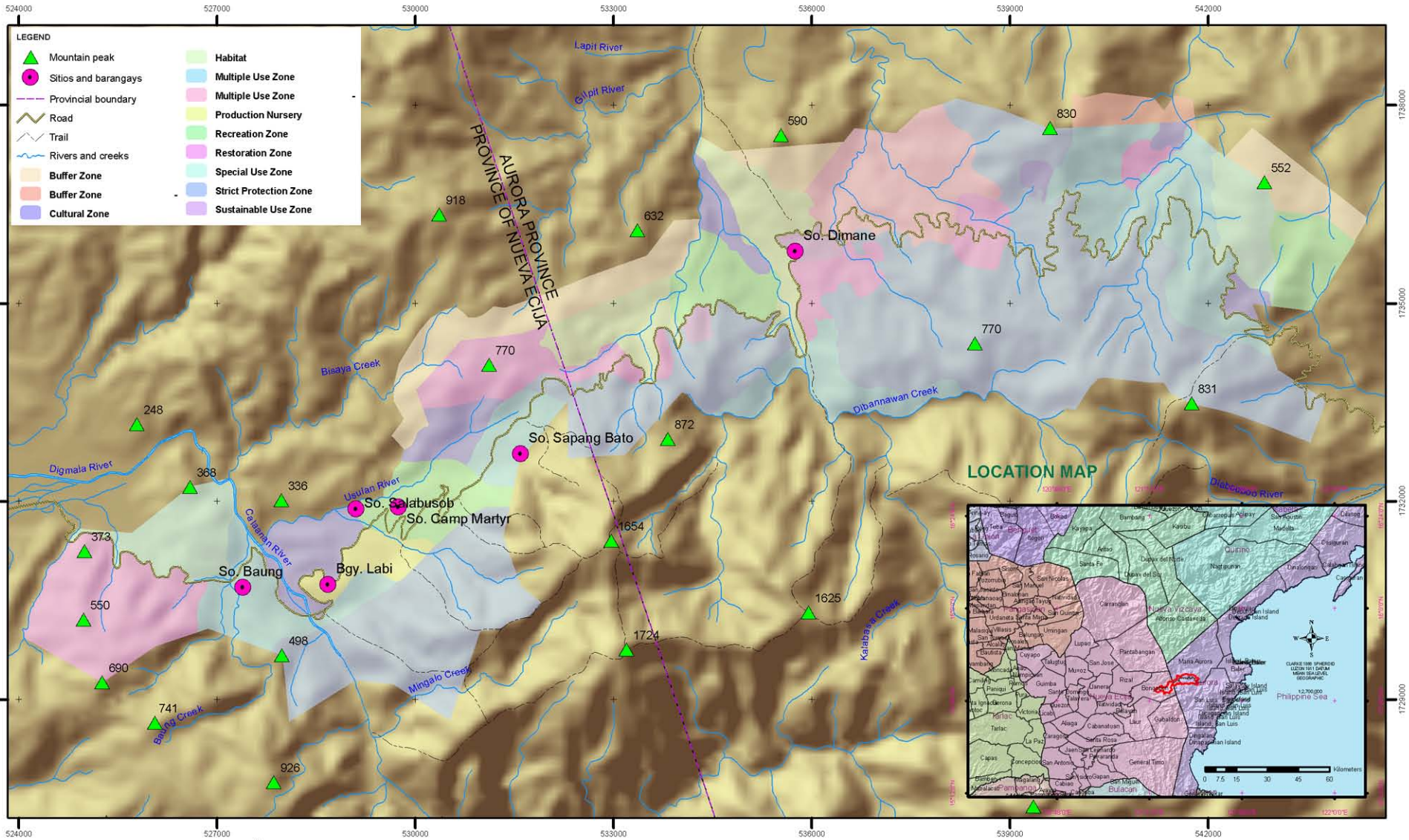


# Map Showing Protected Area Management Board's (PAMB) Proposed Management Zones of Aurora Memorial National Park



**LEGEND**

Mountain peak	Habitat
Sitios and barangays	Multiple Use Zone
Provincial boundary	Multiple Use Zone
Road	Production Nursery
Trail	Recreation Zone
Rivers and creeks	Restoration Zone
Buffer Zone	Special Use Zone
Buffer Zone	Strict Protection Zone
Cultural Zone	Sustainable Use Zone



LOCATED IN BONGABON MUNICIPALITY, PROVINCE OF NUEVA ECIA AND MARIA AURORA AND SAN LUIS MUNICIPALITIES IN THE PROVINCE OF AURORA

Total land area according to the land uses given by PAMB = 6,301.89 hectares  
 Cultural zone = 366.02 hectares  
 Habitat = 349.77 hectares  
 Multiple use zone = 1,364.99 hectares  
 Production nursery = 93.50 hectares  
 Recreation zone = 459.45 hectares  
 Restoration zone = 809.98 hectares  
 Special use zone = 326.96 hectares  
 Strict protection zone = 2,477.22 hectares  
 Sustainable use zone = 54.19 hectares  
 Buffer zone = 545.13 hectares (outside AMNP)

- REFERENCES:**
- The Land Use from PAMB
  - Location of sites and barangays area derived from the Community 3-dimensional Model of Aurora Memorial National Park established in So. Camp Martyr, Bgy. Labi, Nueva Ecija on September 14, 2006.
  - Basic Data, basic, provincial boundary and mountain peak were derived from National Topographic Chart No. 1274-2.
  - NASA Shuttle Radar Topography Mission 30m Elevation Data Courtesy of CGOAR.



Map production: January 30, 2008  
 PAMB - Aurora  
 Bgy. Nueva Ecija, Bongabon  
 Nueva Ecija  
 Telephone 0224029970  
 Email: pamb@pamb.net



Note: Political boundaries are not authoritative