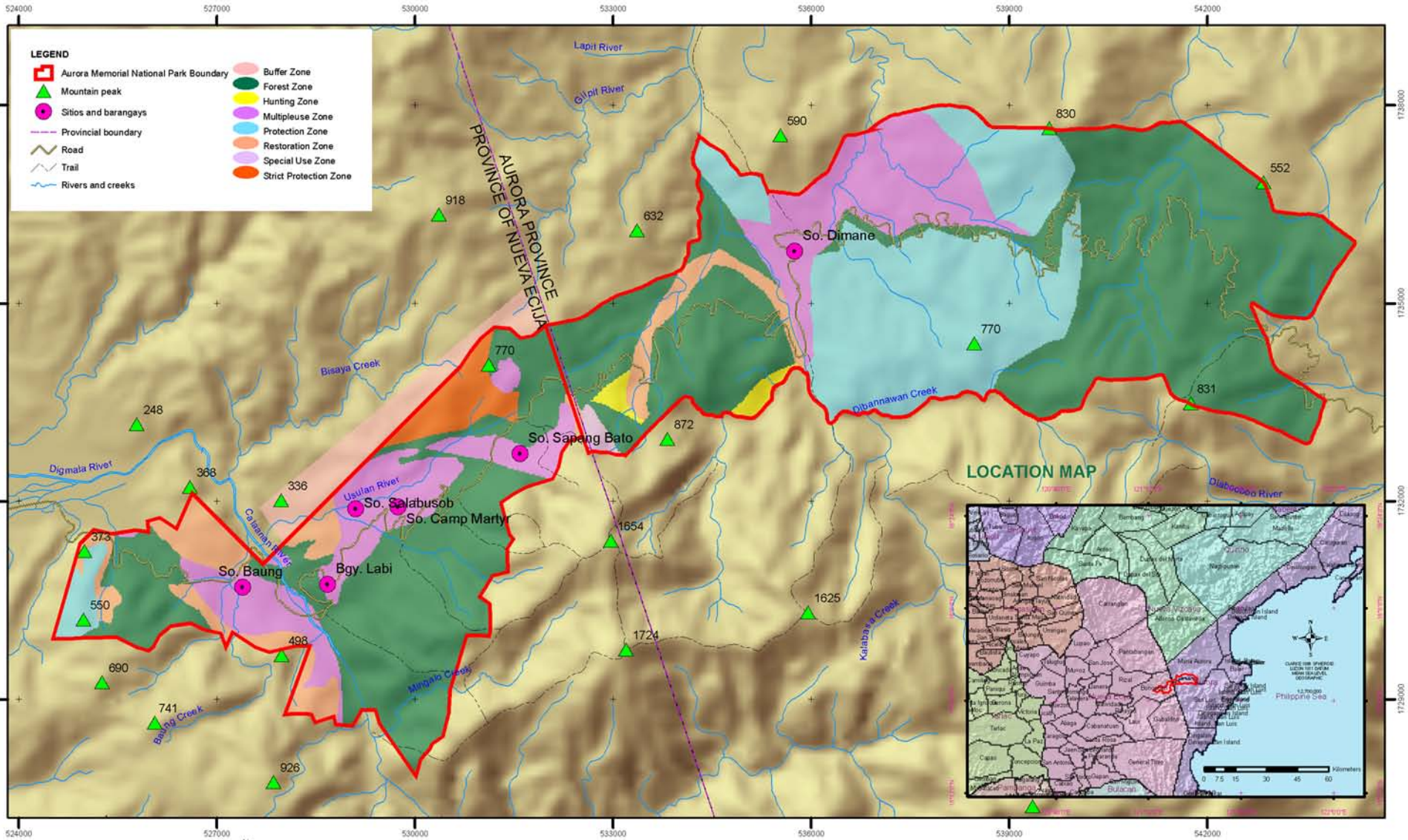
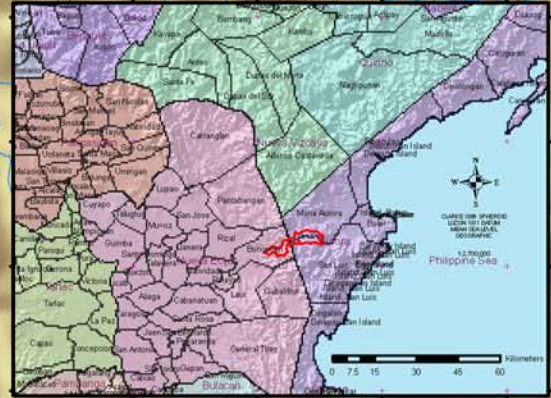


Map Showing Community Proposed Management Zones of Aurora Memorial National Park



LEGEND

Aurora Memorial National Park Boundary	Buffer Zone
Mountain peak	Forest Zone
Sites and barangays	Hunting Zone
Provincial boundary	Multiple-use Zone
Road	Protection Zone
Trail	Restoration Zone
Rivers and creeks	Special Use Zone
	Strict Protection Zone



CLARKE 1866 SPHEROID
 LUZON 1811 DATUM
 MEAN SEA LEVEL
 PTM ZONE 3
 1865000

LOCATED IN BONGABON MUNICIPALITY, PROVINCE OF NUEVA ECUJA AND
 MARIA AURORA AND SAN LUIS MUNICIPALITIES IN THE PROVINCE OF AURORA



Note: Political boundaries are not authoritative.

Estimated total land area of Aurora Memorial National Park (AMNP) = 6,197.35 hectares

Forest zone = 3,326.86 has. or 53.83% of the total land area
Hunting ground = 50.39 has. or 0.81% of the total land area
Multiple-use zone = 1,006.85 has. or 16.25% of the total land area
Protection zone = 1,272.07 has. or 20.53% of the total land area
Restoration zone = 360.88 has. or 5.82% of the total land area
Strict protection zone = 127.31 has. or 2.05% of the total land area

REFERENCES

1. The land uses and location of sites and barangays were derived from the Community 3-dimensional Model of Aurora Memorial National Park contracted in So. Camp Martyr, Bgy. Labi, Bongabon, Nueva Ecija on September 14, 2005.
2. Roads, trails, rivers, provincial boundary and mountain peaks were digitized from NAMRIA Topographic Sheet No. 7274.2
3. The national park boundary of Nueva Ecija Province was obtained from a Differential GPS survey conducted on April to May 2000 while boundary in Aurora side was derived from the AMNP 3-dimensional model
4. NASA Shuttle Radar Topography Mission 30m Elev ation Data Courtesy of CGIAR.

Thanks to:



Map production: January 30, 2008
 PAFD - Aurora
 Bgy. Nueva Ecija East, Bongabon,
 Nueva Ecija
 Telephone 02424629310
 Email: pafd@pafdnep.net