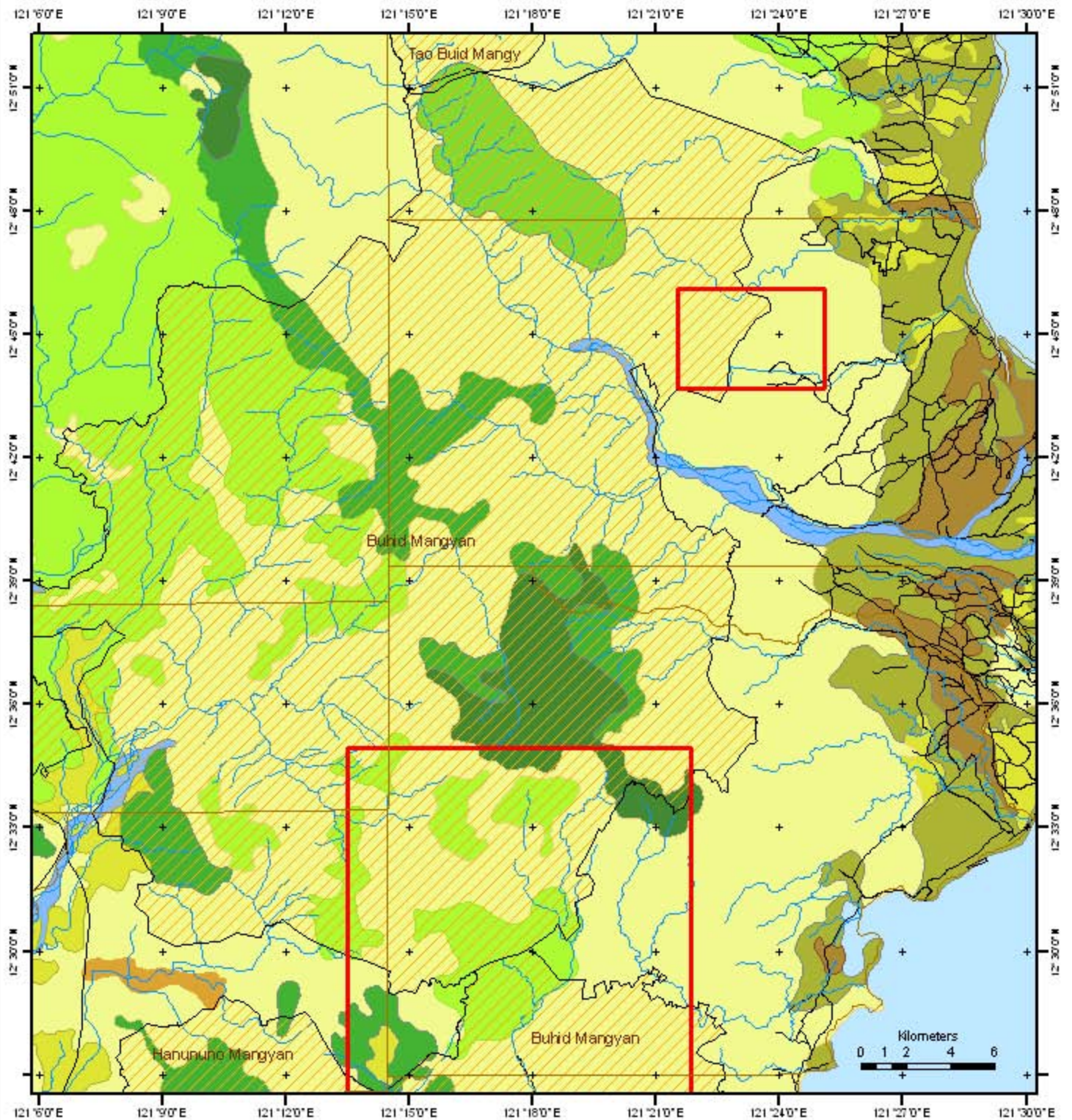


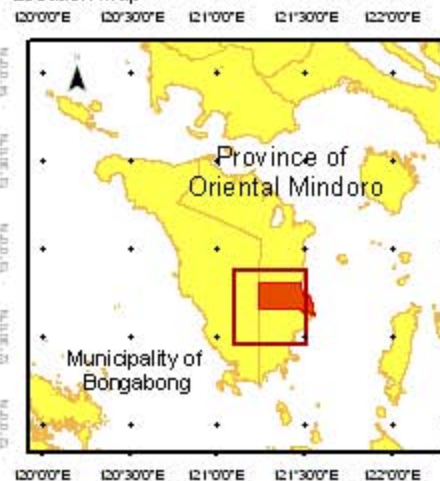
OVERLAP OF THE BUHID MANGYAN CADC AND THE PRESIDENTIAL PROCLAMATION 2282 AREA IN BONGABONG, ORIENTAL MINDORO, PHILIPPINES



Legend

- Presidential Proclamation 2282 areas
- Limit of Buhid Mangyan CADC
- Municipal boundary
- Rivers
- Roads
- Land use
- Riverbeds
- Grassland, grass covering > 70 percent
- Cultivated Area mixed with brushland/grassland
- Arable land, crops mainly cereals and sugar
- Crop land mixed with other plantation
- Coconut plantations
- Crop land mixed with coconut plantation
- Mossy forest
- Open canopy
- Closed canopy

Location map



Clark 1866 Spheroid
Geographic Projection
Luzon 1911 Datum
Mean Sea Level

1 centimeter equals 2.50 kilometers

Data Sources:

1. Presidential Proclamation 2282, 1963
2. NAMRIA : Rivers, Roads, Political Boundaries and Contours are digitizes from Topographic Maps
3. CADC, PAFID, Differential GPS Surveys of Indigenous Territories, 1998

Map produce by PAFID

September 2007

PAFID
Philippine Association for Intercultural Development