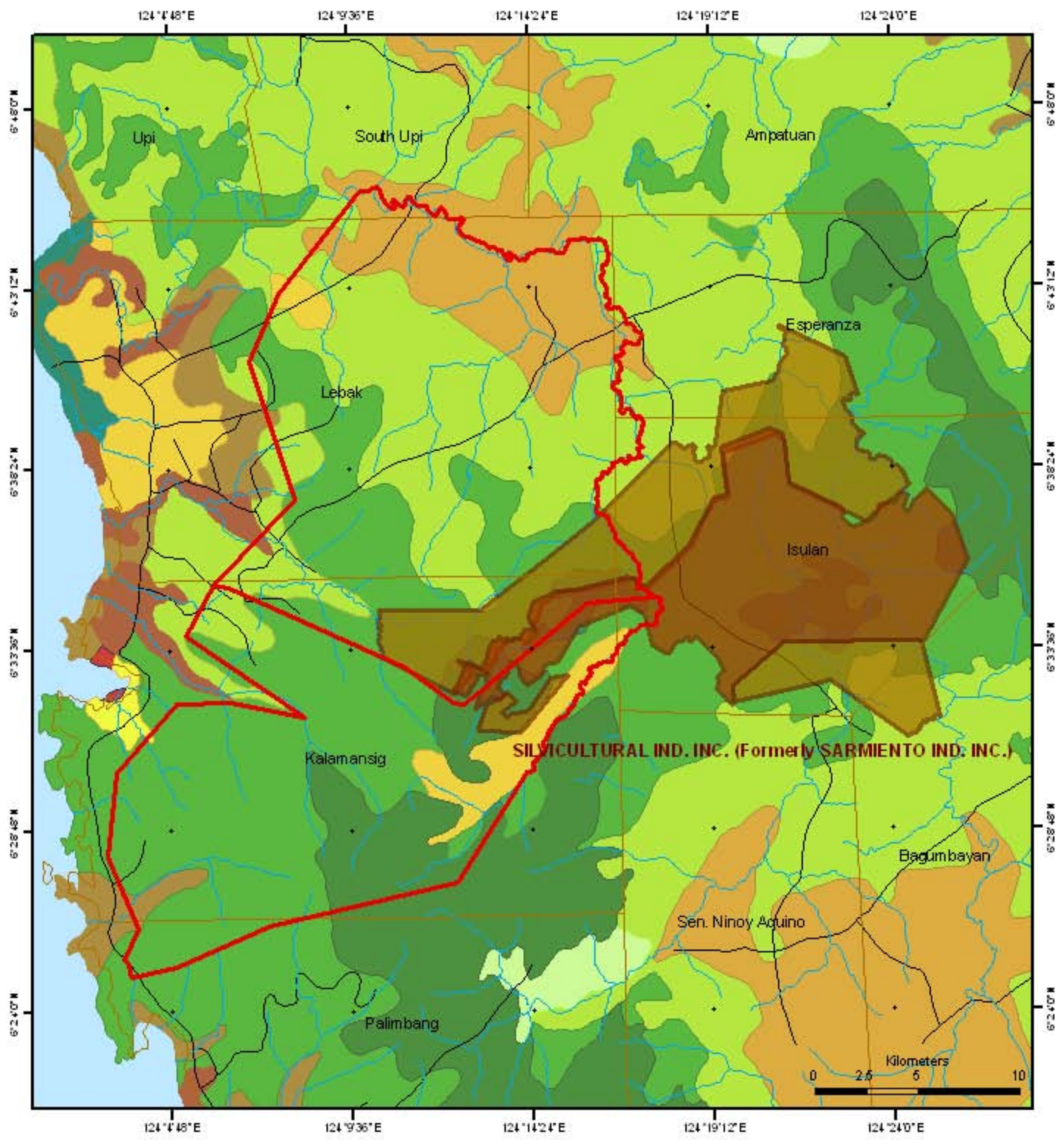


OVERLAP BETWEEN THE ANCESTRAL DOMAIN OF THE BUAYANON INDIGENOUS PEOPLES AND THE IFMA AREAS



Legend

- | | |
|----------------------|---|
| Manobo CADC area | Land use |
| IFMA#22 | Built-up Area |
| IFMA#20 | Coconut plantations |
| Municipal boundaries | Crop land mixed with coconut plantation |
| Rivers | Crop land mixed with other plantation |
| Roads | Arable land, crops mainly cereals and sugar |
| | Other plantations |
| | Cultivated Area mixed with brushland/grassland |
| | Grassland, grass covering > 70 percent |
| | Mangrove vegetation |
| | Open canopy, mature trees covering < 50 percent |
| | Closed canopy, mature trees covering > 50 percent |

Location map



1 centimeter equals 2.72 kilometers

Data Sources:

1. Department of Energy. CADC. 1998.
2. NAMRIA. Topographic Maps: Political Boundaries and Contours.
3. Ifma. DNR. 2007

Map produced by:

PAFID Philippine Association for Intercultural Development September 2007