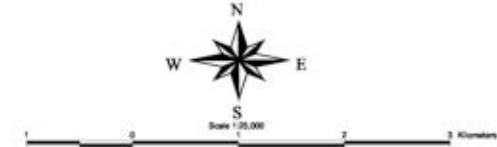
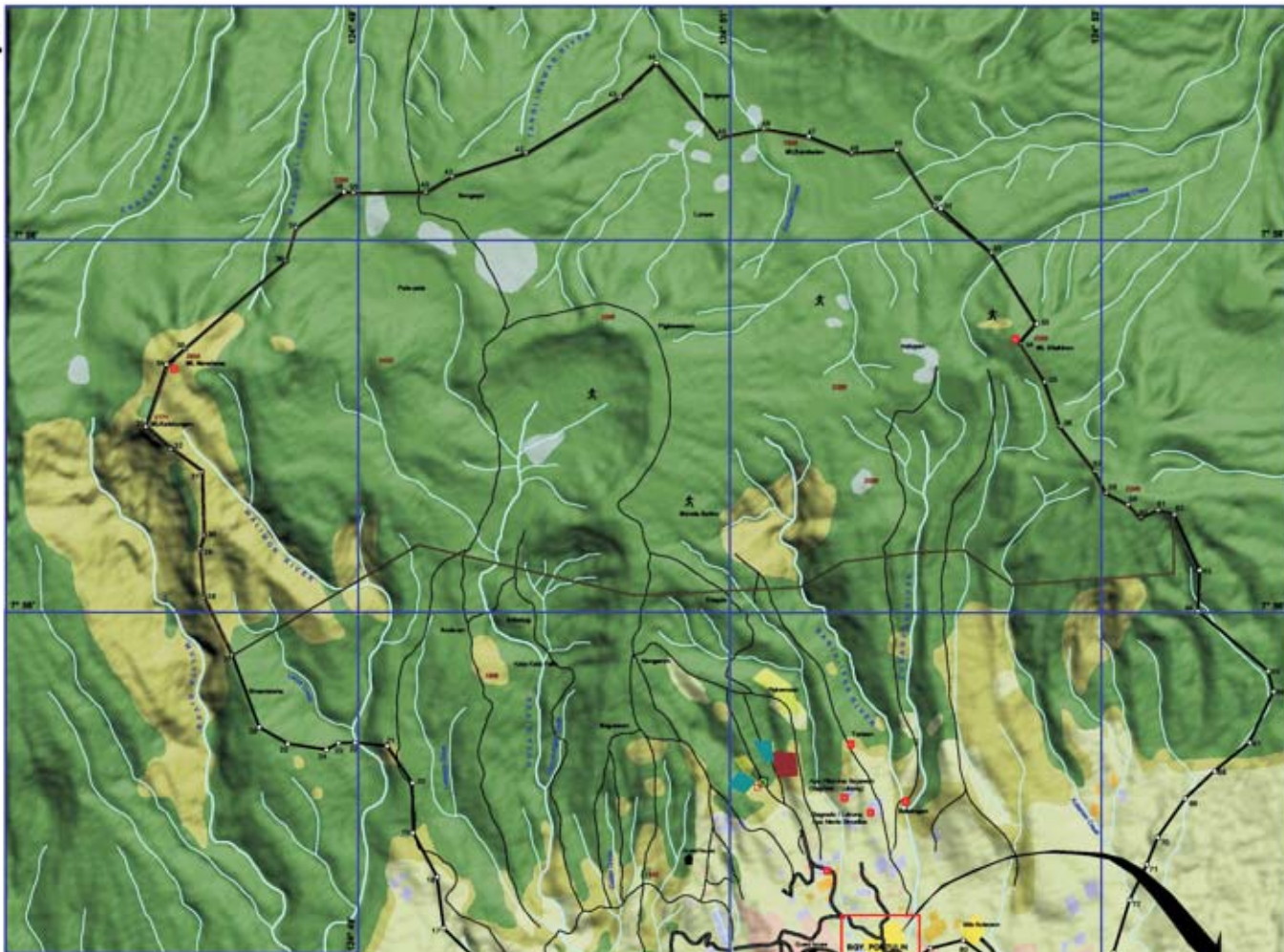


PRESENT LAND USE MAP OF PORTULIN TRIBAL ASSOCIATION, INC. (P. T. A)



Situated in
Barangay: PORTULIN
Municipality of: PANGANTUCAN
Province of: BUKIDNON

Corner No.	Area (ha)	Bearing	Distance	Latitude	Longitude	Area (ha)	Remarks	Notes	Remarks
1	1.2	S 89°30'00" W	300.00	7°54'00" N	124°57'00" E	124.57	124.57	Portulin	Kahoyan - Forested
2	3.4	S 87°00'00" W	238.75	7°53'00" N	124°57'00" E	124.57	124.57	Portulin	Kahoyan - Forested
3	4.4	S 87°00'00" W	238.75	7°53'00" N	124°57'00" E	124.57	124.57	Portulin	Kahoyan - Forested
4	4.4	S 87°00'00" W	238.75	7°53'00" N	124°57'00" E	124.57	124.57	Portulin	Kahoyan - Forested
5	8.8	S 87°00'00" W	477.50	7°52'00" N	124°57'00" E	124.57	124.57	Portulin	Kahoyan - Forested
6	8.8	S 87°00'00" W	477.50	7°52'00" N	124°57'00" E	124.57	124.57	Portulin	Kahoyan - Forested
7	17.6	S 87°00'00" W	955.00	7°51'00" N	124°57'00" E	124.57	124.57	Portulin	Kahoyan - Forested
8	17.6	S 87°00'00" W	955.00	7°51'00" N	124°57'00" E	124.57	124.57	Portulin	Kahoyan - Forested
9	35.2	S 87°00'00" W	1910.00	7°50'00" N	124°57'00" E	124.57	124.57	Portulin	Kahoyan - Forested
10	35.2	S 87°00'00" W	1910.00	7°50'00" N	124°57'00" E	124.57	124.57	Portulin	Kahoyan - Forested
11	114.3	S 89°30'00" W	571.25	7°54'00" N	124°57'00" E	124.57	124.57	Portulin	Kahoyan - Forested
12	114.3	S 89°30'00" W	571.25	7°54'00" N	124°57'00" E	124.57	124.57	Portulin	Kahoyan - Forested
13	152.4	S 87°00'00" W	1192.50	7°53'00" N	124°57'00" E	124.57	124.57	Portulin	Kahoyan - Forested
14	152.4	S 87°00'00" W	1192.50	7°53'00" N	124°57'00" E	124.57	124.57	Portulin	Kahoyan - Forested
15	152.4	S 87°00'00" W	1192.50	7°53'00" N	124°57'00" E	124.57	124.57	Portulin	Kahoyan - Forested
16	152.4	S 87°00'00" W	1192.50	7°53'00" N	124°57'00" E	124.57	124.57	Portulin	Kahoyan - Forested
17	152.4	S 87°00'00" W	1192.50	7°53'00" N	124°57'00" E	124.57	124.57	Portulin	Kahoyan - Forested
18	152.4	S 87°00'00" W	1192.50	7°53'00" N	124°57'00" E	124.57	124.57	Portulin	Kahoyan - Forested
19	152.4	S 87°00'00" W	1192.50	7°53'00" N	124°57'00" E	124.57	124.57	Portulin	Kahoyan - Forested
20	152.4	S 87°00'00" W	1192.50	7°53'00" N	124°57'00" E	124.57	124.57	Portulin	Kahoyan - Forested
21	152.4	S 87°00'00" W	1192.50	7°53'00" N	124°57'00" E	124.57	124.57	Portulin	Kahoyan - Forested
22	152.4	S 87°00'00" W	1192.50	7°53'00" N	124°57'00" E	124.57	124.57	Portulin	Kahoyan - Forested
23	152.4	S 87°00'00" W	1192.50	7°53'00" N	124°57'00" E	124.57	124.57	Portulin	Kahoyan - Forested
24	152.4	S 87°00'00" W	1192.50	7°53'00" N	124°57'00" E	124.57	124.57	Portulin	Kahoyan - Forested
25	152.4	S 87°00'00" W	1192.50	7°53'00" N	124°57'00" E	124.57	124.57	Portulin	Kahoyan - Forested
26	152.4	S 87°00'00" W	1192.50	7°53'00" N	124°57'00" E	124.57	124.57	Portulin	Kahoyan - Forested
27	152.4	S 87°00'00" W	1192.50	7°53'00" N	124°57'00" E	124.57	124.57	Portulin	Kahoyan - Forested
28	152.4	S 87°00'00" W	1192.50	7°53'00" N	124°57'00" E	124.57	124.57	Portulin	Kahoyan - Forested
29	152.4	S 87°00'00" W	1192.50	7°53'00" N	124°57'00" E	124.57	124.57	Portulin	Kahoyan - Forested
30	152.4	S 87°00'00" W	1192.50	7°53'00" N	124°57'00" E	124.57	124.57	Portulin	Kahoyan - Forested
31	152.4	S 87°00'00" W	1192.50	7°53'00" N	124°57'00" E	124.57	124.57	Portulin	Kahoyan - Forested
32	152.4	S 87°00'00" W	1192.50	7°53'00" N	124°57'00" E	124.57	124.57	Portulin	Kahoyan - Forested
33	152.4	S 87°00'00" W	1192.50	7°53'00" N	124°57'00" E	124.57	124.57	Portulin	Kahoyan - Forested
34	152.4	S 87°00'00" W	1192.50	7°53'00" N	124°57'00" E	124.57	124.57	Portulin	Kahoyan - Forested
35	152.4	S 87°00'00" W	1192.50	7°53'00" N	124°57'00" E	124.57	124.57	Portulin	Kahoyan - Forested
36	152.4	S 87°00'00" W	1192.50	7°53'00" N	124°57'00" E	124.57	124.57	Portulin	Kahoyan - Forested
37	152.4	S 87°00'00" W	1192.50	7°53'00" N	124°57'00" E	124.57	124.57	Portulin	Kahoyan - Forested
38	152.4	S 87°00'00" W	1192.50	7°53'00" N	124°57'00" E	124.57	124.57	Portulin	Kahoyan - Forested
39	152.4	S 87°00'00" W	1192.50	7°53'00" N	124°57'00" E	124.57	124.57	Portulin	Kahoyan - Forested
40	152.4	S 87°00'00" W	1192.50	7°53'00" N	124°57'00" E	124.57	124.57	Portulin	Kahoyan - Forested
41	152.4	S 87°00'00" W	1192.50	7°53'00" N	124°57'00" E	124.57	124.57	Portulin	Kahoyan - Forested
42	152.4	S 87°00'00" W	1192.50	7°53'00" N	124°57'00" E	124.57	124.57	Portulin	Kahoyan - Forested
43	152.4	S 87°00'00" W	1192.50	7°53'00" N	124°57'00" E	124.57	124.57	Portulin	Kahoyan - Forested
44	152.4	S 87°00'00" W	1192.50	7°53'00" N	124°57'00" E	124.57	124.57	Portulin	Kahoyan - Forested
45	152.4	S 87°00'00" W	1192.50	7°53'00" N	124°57'00" E	124.57	124.57	Portulin	Kahoyan - Forested
46	152.4	S 87°00'00" W	1192.50	7°53'00" N	124°57'00" E	124.57	124.57	Portulin	Kahoyan - Forested
47	152.4	S 87°00'00" W	1192.50	7°53'00" N	124°57'00" E	124.57	124.57	Portulin	Kahoyan - Forested
48	152.4	S 87°00'00" W	1192.50	7°53'00" N	124°57'00" E	124.57	124.57	Portulin	Kahoyan - Forested
49	152.4	S 87°00'00" W	1192.50	7°53'00" N	124°57'00" E	124.57	124.57	Portulin	Kahoyan - Forested
50	152.4	S 87°00'00" W	1192.50	7°53'00" N	124°57'00" E	124.57	124.57	Portulin	Kahoyan - Forested
51	152.4	S 87°00'00" W	1192.50	7°53'00" N	124°57'00" E	124.57	124.57	Portulin	Kahoyan - Forested
52	152.4	S 87°00'00" W	1192.50	7°53'00" N	124°57'00" E	124.57	124.57	Portulin	Kahoyan - Forested
53	152.4	S 87°00'00" W	1192.50	7°53'00" N	124°57'00" E	124.57	124.57	Portulin	Kahoyan - Forested
54	152.4	S 87°00'00" W	1192.50	7°53'00" N	124°57'00" E	124.57	124.57	Portulin	Kahoyan - Forested
55	152.4	S 87°00'00" W	1192.50	7°53'00" N	124°57'00" E	124.57	124.57	Portulin	Kahoyan - Forested
56	152.4	S 87°00'00" W	1192.50	7°53'00" N	124°57'00" E	124.57	124.57	Portulin	Kahoyan - Forested
57	152.4	S 87°00'00" W	1192.50	7°53'00" N	124°57'00" E	124.57	124.57	Portulin	Kahoyan - Forested
58	152.4	S 87°00'00" W	1192.50	7°53'00" N	124°57'00" E	124.57	124.57	Portulin	Kahoyan - Forested
59	152.4	S 87°00'00" W	1192.50	7°53'00" N	124°57'00" E	124.57	124.57	Portulin	Kahoyan - Forested
60	152.4	S 87°00'00" W	1192.50	7°53'00" N	124°57'00" E	124.57	124.57	Portulin	Kahoyan - Forested
61	152.4	S 87°00'00" W	1192.50	7°53'00" N	124°57'00" E	124.57	124.57	Portulin	Kahoyan - Forested
62	152.4	S 87°00'00" W	1192.50	7°53'00" N	124°57'00" E	124.57	124.57	Portulin	Kahoyan - Forested
63	152.4	S 87°00'00" W	1192.50	7°53'00" N	124°57'00" E	124.57	124.57	Portulin	Kahoyan - Forested
64	152.4	S 87°00'00" W	1192.50	7°53'00" N	124°57'00" E	124.57	124.57	Portulin	Kahoyan - Forested
65	152.4	S 87°00'00" W	1192.50	7°53'00" N	124°57'00" E	124.57	124.57	Portulin	Kahoyan - Forested
66	152.4	S 87°00'00" W	1192.50	7°53'00" N	124°57'00" E	124.57	124.57	Portulin	Kahoyan - Forested
67	152.4	S 87°00'00" W	1192.50	7°53'00" N	124°57'00" E	124.57	124.57	Portulin	Kahoyan - Forested
68	152.4	S 87°00'00" W	1192.50	7°53'00" N	124°57'00" E	124.57	124.57	Portulin	Kahoyan - Forested
69	152.4	S 87°00'00" W	1192.50	7°53'00" N	124°57'00" E	124.57	124.57	Portulin	Kahoyan - Forested
70	152.4	S 87°00'00" W	1192.50	7°53'00" N	124°57'00" E	124.57	124.57	Portulin	Kahoyan - Forested
71	152.4	S 87°00'00" W	1192.50	7°53'00" N	124°57'00" E	124.57	124.57	Portulin	Kahoyan - Forested
72	152.4	S 87°00'00" W	1192.50	7°53'00" N	124°57'00" E	124.57	124.57	Portulin	Kahoyan - Forested
73	152.4	S 87°00'00" W	1192.50	7°53'00" N	124°57'00" E	124.57	124.57	Portulin	Kahoyan - Forested
74	152.4	S 87°00'00" W	1192.50	7°53'00" N	124°57'00" E	124.57	124.57	Portulin	Kahoyan - Forested
75	152.4	S 87°00'00" W	1192.50	7°53'00" N	124°57'00" E	124.57	124.57	Portulin	Kahoyan - Forested
76	152.4	S 87°00'00" W	1192.50	7°53'00" N	124°57'00" E	124.57	124.57	Portulin	Kahoyan - Forested
77	152.4	S 87°00'00" W	1192.50	7°53'00" N	124°57'00" E	124.57	124.57	Portulin	Kahoyan - Forested
78	152.4	S 87°00'00" W	1192.50	7°53'00" N	124°57'00" E	124.57	124.57	Portulin	Kahoyan - Forested
79	152.4	S 87°00'00" W	1192.50	7°53'00" N	124°57'00" E	124.57	124.57	Portulin	Kahoyan - Forested
80	152.4	S 87°00'00" W	1192.50	7°53'00" N	124°57'00" E	124.57	124.57	Portulin	Kahoyan - Forested
81	152.4	S 87°00'00" W	1192.50	7°53'00" N	124°57'00" E	124.57	124.57	Portulin	Kahoyan - Forested



REFERENCES:
PROJECTION: TRANSVERSE MERCATOR
ELLIPSOID: CLARKE 1866 SPHEROID
DATUM: FRIED
ELEVATION: MEAN SEA LEVEL

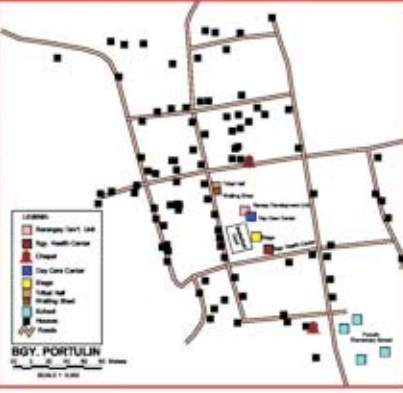
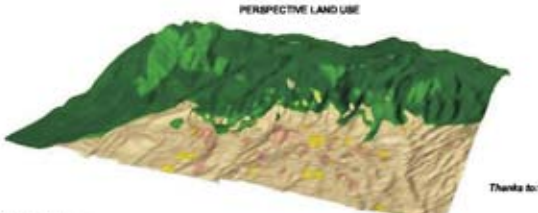
SOURCES OF INFORMATION:
Corners obtained from actual GPS survey conducted last Nov. 11-21, 2021.
Rivers, creeks, trails, roads, land use, community sites obtained from the 3-Dimensional (3D) map constructed in the community.
Mountain peaks and landmarks obtained from NAMRIA 1:50,000 topographic map sheet # 3343-1.

LEGEND:

- Community Conserved Area (3,451.15 has)
- Latitude & Longitude
- PFTA LAMP Billboard
- Guard House
- Hunery
- Hunery house
- Hunting Ground
- Sacred Place
- GPS Corners
- PFTA Claim (6,803.62 has)
- Trails
- Creeks
- Rivers
- Roads

Land Use

- Forest (4067.50 has)
- Secondary Forest (812.16 has)
- Urbano (79.16 has)
- Rubo (11.18 has)
- Abasco (5.00 has)
- Mix Rubo & Ruban (6.76 has)
- Residential Area (29.50 has)
- Pakpahan/Cogonal Area (836.6 has)
- Sugarcane / Tuber (106.73 has)
- Orion / Sibuyes (2.76 has)
- Com / Mala (38.65 has)
- Cerrito (6.54 has)



Map Production by:
PAFID-Mindanao
Philippine Association For Intercultural Development, Inc.
#9 Coca - Cola Village, Matina, Davao City
<http://www.pafid.org>

