

# PRESENT LAND USE MAP OF THE Indigenous People of Balbalan

Luzon Island, Kalinga Province, Republic of the Philippines

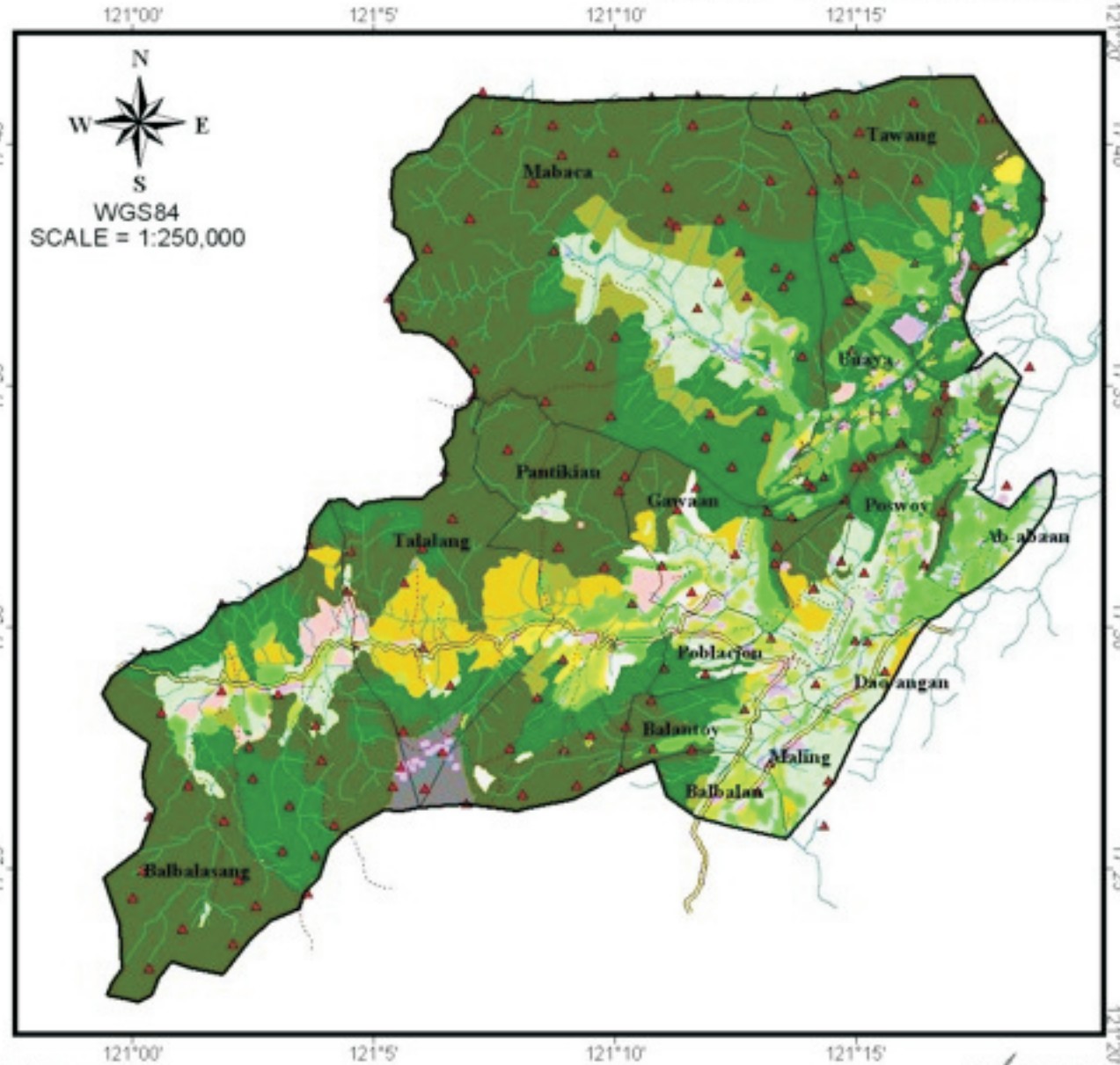
TOTAL AREA = 68,065.944981 HECTARES

## Legend

- Mountain Peak
- Trails
- Roads
- Rivers
- Municipality

## Land Use:

	Coffee Plantation	4,448.92 has.	6.54% of total area
	Communal Forest	2,339.36	3.44
	Communal Pastures	852.61	1.25
	Fish Pond	0.85	0
	Grass Land	552.66	0.81
	Grind Stone	13.13	0.02
	Kaingin	8,361.47	12.28
	Mine Site	780.57	1.15
	Pasture Land	2,907.93	4.27
	Residential	919.18	1.35
	Rice Terraces	2,229.80	3.28
	Stone Mt.	720.54	1.06
	Tiger Grass	30.75	0.05
	Virgin Forest	29,904.41	43.93
	Watershed	14,003.75	20.57



WGS84  
SCALE = 1:250,000

Data Sources:  
1- Balbalan Municipality 3-D Map (August, 2001)  
2- NAMRIA Topographic Maps

2 0 2 4 6 8 10 Kilometers

