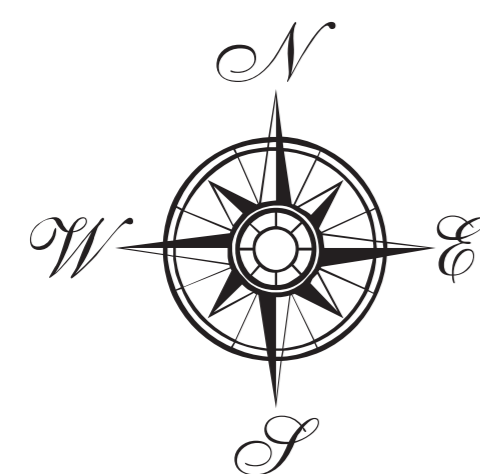


PRESENT LAND USE MAP TREMADDO ANCESTRAL DOMAIN



Scale = 1:125,000

Total area = 13,456.594638 has.

CLARKE 1866 SPHEROID
PTM ZONE V
LUZON 1911 DATUM
MEAN SEA LEVEL

LOCATED IN:

Bgys. Cebolin, Pangyan, Salvacion, San Ignacio, San Isidro, San Roque, Sta. Maria & Tudela in Trento Municipality, Agusan del Sur; Bgy. Pasian in Moncayo Municipality, Davao del Norte; and Bgy. Simulao in Boston Municipality, Davao Oriental.

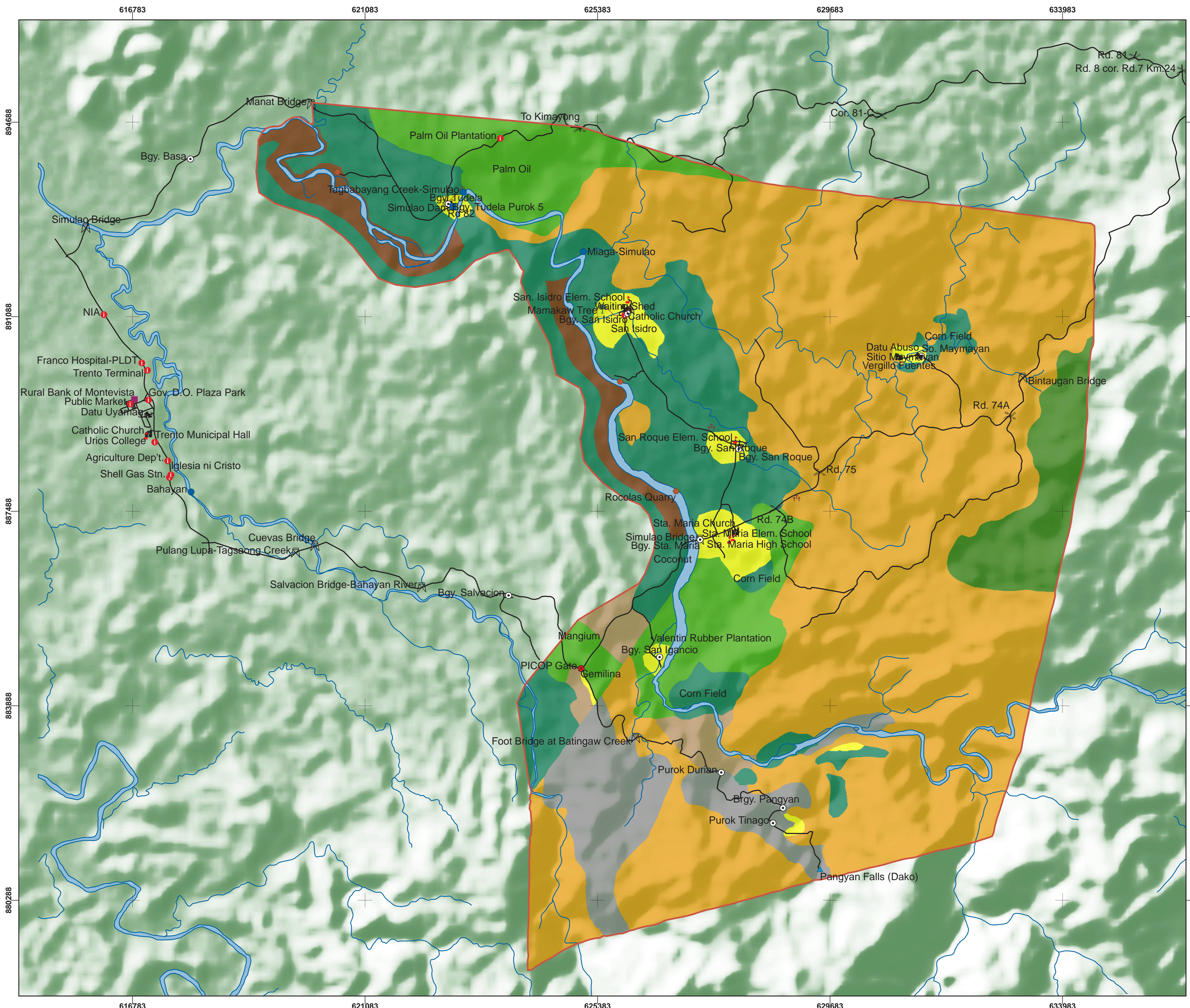
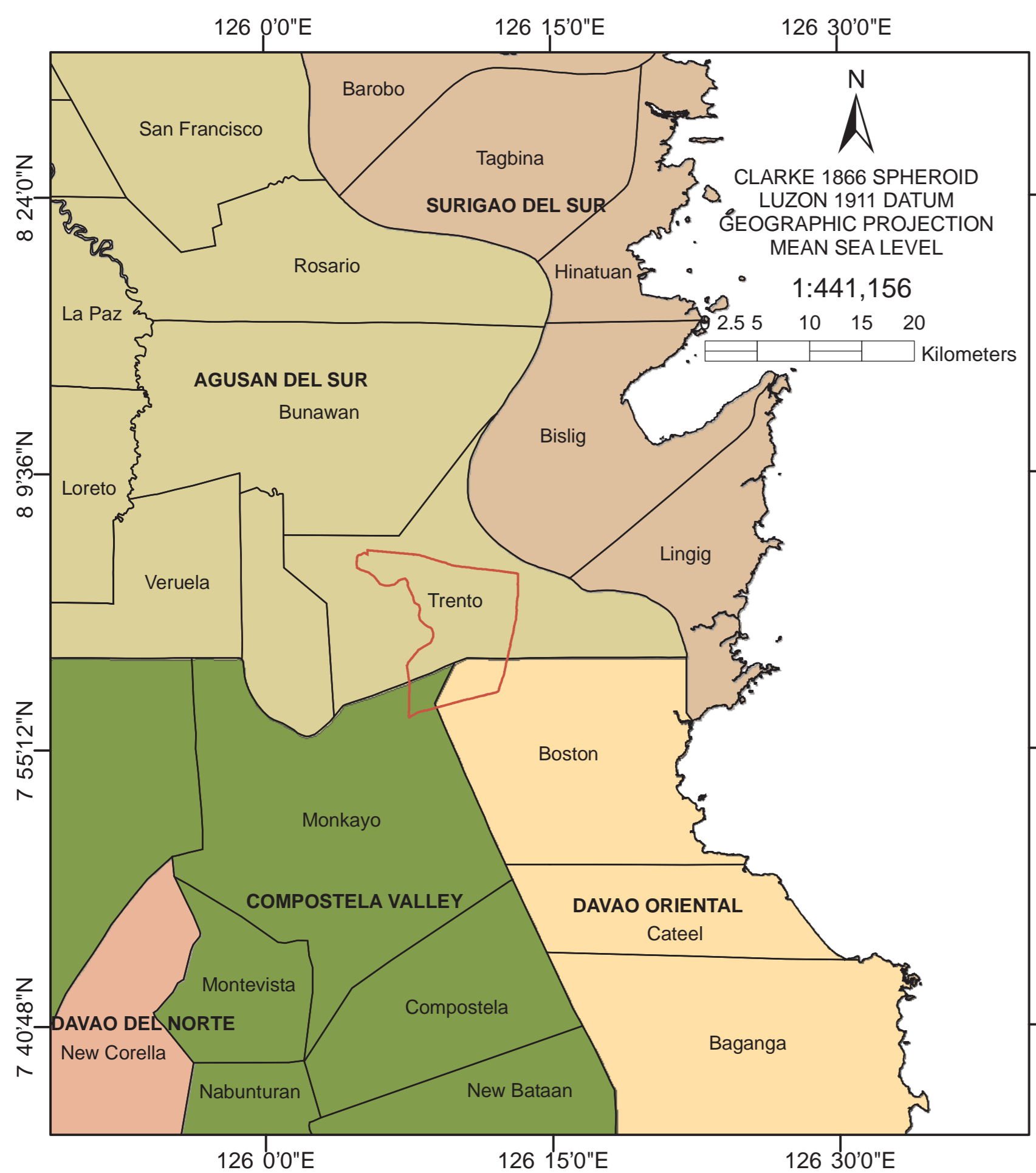


Note: Political boundaries are not authoritative.

Legend

- | | |
|---|-------------------|
| Trento Manobo Ancestral Domain Organization | Barangay & Sitios |
| Road | Bridge |
| Trail | Cemetery |
| Rivers & Creeks | Church |
| Land Uses | Dam |
| Alienable & Disposable = 221.36196 has. or 1.6% | Facility |
| Agricultural Land = 2,321.174387 has. or 17.3% | Falls |
| Kaingin = 778.715325 has. or 5.8% | PICOP Gate |
| PICOP = 7,488.211244 has. or 55.6% | House |
| Residential = 329.083625 has. or 2.4% | Landmarks |
| Residual Forest = 515.796713 has. or 3.8% | Quarry |
| Sand & Gravel = 525.510214 has. or 3.9% | River Junction |
| Tree Plantation = 1,276.741169 has. or 9.5% | Road Junction |
| | School |
| | Tree |

Location Map



Thanks to:



Production Date: 27 September 2007



PAFID
7th Street, Butuan Basic Homes
Baan, Butuan City
E-mail address: pafid_caraga@yahoo.com
Tel.No. (085) 341-1659

References:

1. PAFID. Road network generated from Differential GPS survey from February 22 to March 4, 2004.
2. Rivers and creeks were digitized from NAMRIA Topographic Map Sheet nos. 4243-IV and 4244-III.
3. Hole-filled seamless elevation data from NASA Shuttle Radar Topography Mission courtesy of CGIAR. February 2000.